

High Density Right Angle D-Sub

3778RH SERIES

❖ Current Rating 3A

Series options:

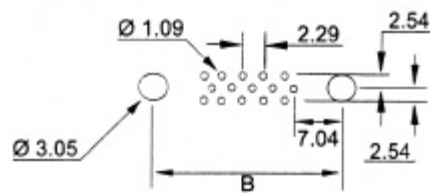
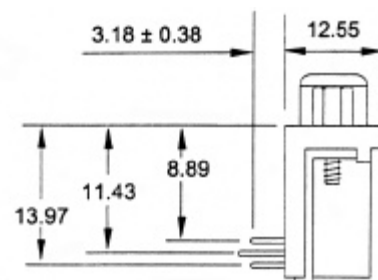
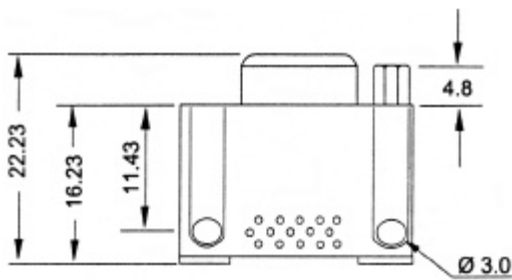
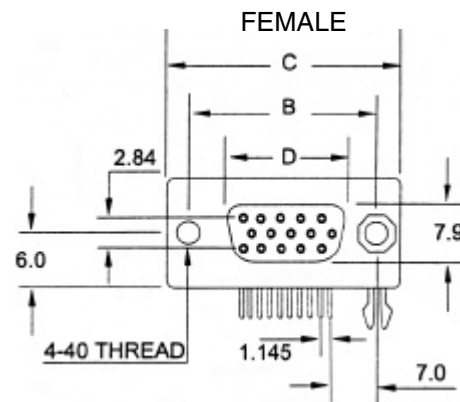
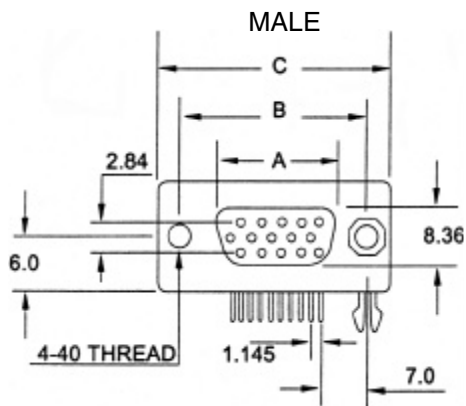
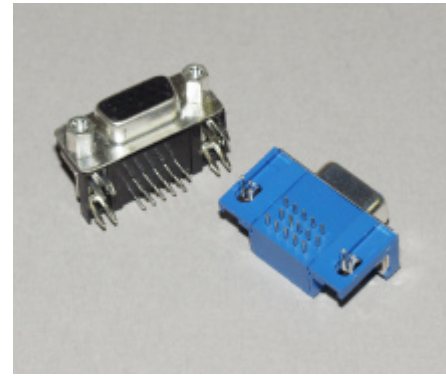
A = 4-40 Jack screws assembled on connector

B = Board locks

F = Ferrite

J = 4-40 Jack screws (bulk packed)

T = Threaded inserts



PC Board Layout

Ordering Example:

3778RH - 15P - 1BT

Positions	A	B	C	D
15	16.92	24.99	30.81	16.33
26	25.25	33.32	39.10	24.66
44	38.96	47.04	53.10	38.38
62	55.42	63.50	69.32	54.84